

Type RHT

Roof Hatch, single lid, Aluminium			
Type	A	B	Weight
RHT7090	700 mm	900 mm	33 kg
RHT9090	900 mm	900 mm	39 kg
RHT7014	700 mm	1400 mm	64 kg
RHT1015	1000 mm	1500 mm	72 kg
RHT1212	1200 mm	1200 mm	78 kg
RHT1020	1000 mm	2000 mm	86 kg
RHT9024	900 mm	2400 mm	94 kg

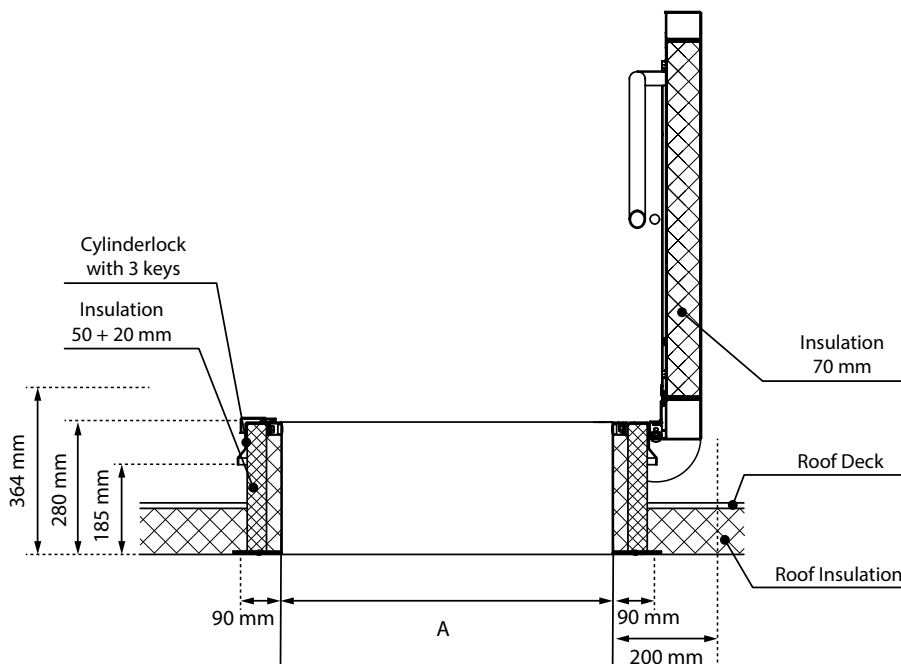
Type RHTEI

Roof Hatch, Fire Rated EI as per AS1530-4, Steel			
Type	A	B	Weight
RHTEI7090	700 mm	900 mm	112 kg
RHTEI9090	900 mm	900 mm	133 kg
RHTEI7014	700 mm	1400 mm	150 kg
RHTEI1015	1000 mm	1500 mm	198 kg
RHTEI1212	1200 mm	1200 mm	200 kg
RHTEI9024	900 mm	2400 mm	270 kg

Type RHTG

Roof Hatch, Glazed			
Type	A	B	Weight
RHTG1015	1000 mm	1500 mm	195 kg
RHTG9024	900 mm	2400 mm	245 kg

User manual and installation instructions supplied with product.



Opening Size

The opening size of the roof hatch will match the structural opening size of the roof. If combined with a scissor stair attic ladder, the opening size may differ - please consult www.gortergroup.com for confirmation.

Cladding

If the inside of the roof or ceiling cavity is to be cladded to finish flush with the opening of the roof hatch, the structural opening in the roof must be enlarged on all sides by the thickness of the cladding material.

- » With the lid(s) opened, confirm that the hatch is correctly located over the roof opening.
- » If cladding is going to be fitted, ensure that the extra space for cladding is equal on all sides.
- » Place the upstand carefully to ensure the frame is torsionless and square.
- » Use appropriate fasteners to secure the hatch to the roof deck through the pre-fitted swivel mounting brackets.
- » To ensure watertightness, appropriate flashings must be fitted up-to the underside of the flange.